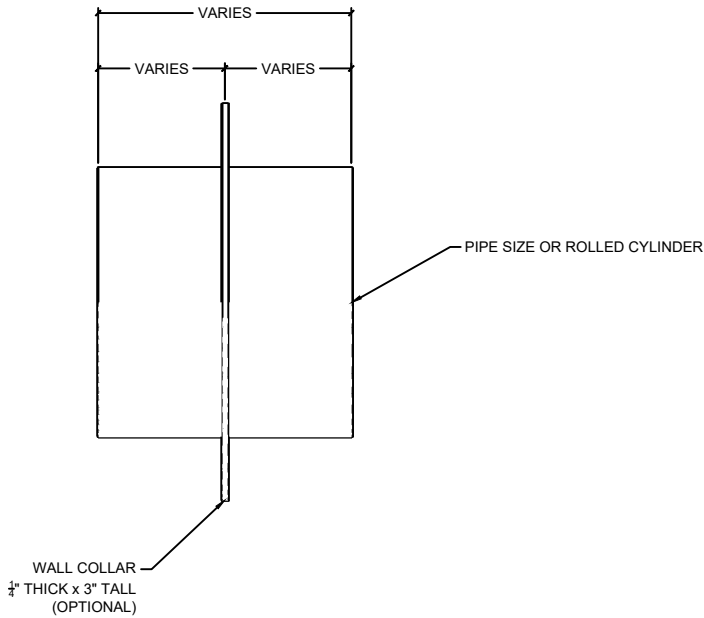


WALL SLEEVES AVAILABLE IN:
 CARBON STEEL - SCH. 40s (BARE, SHOP PRIMED OR HOT DIP GALVANIZED)
 STAINLESS STEEL - SCH. 10s OR SCH. 40s; T304L OR T316L (BARE)



"Quality Steel Fab for the Waterworks Industry"
www.pipesupportsplus.com

THIS DRAWING IS THE PROPERTY OF PIPE SUPPORTS PLUS AND MUST BE RETURNED UPON REQUEST. REPRODUCTION HEREOF OR TRANSMISSIONS MAY NOT BE MADE WITHOUT CONSENT

APPROVED FOR FABRICATION

SIGN : _____

PRINT : _____

DATE : _____

Description

WALL SLEEVE
 W/ OPTIONAL 1/4" x 3" TALL COLLAR

File

Wall Sleeve With Option 1_4 x 3 Tall Collar.dwg

Drawn

MAP

Date

5/11/2021

N.T.S

ALL DIMENSIONS ARE IN INCH.